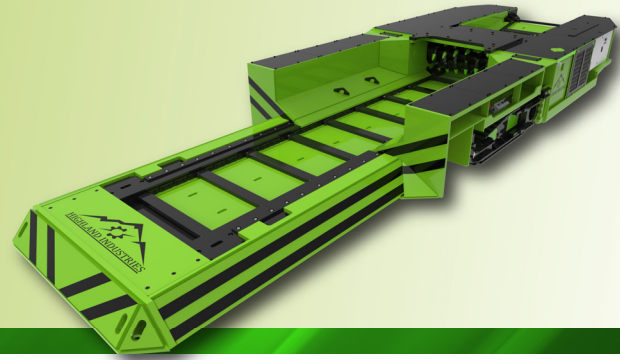




## MOBILE FEEDER BREAKER

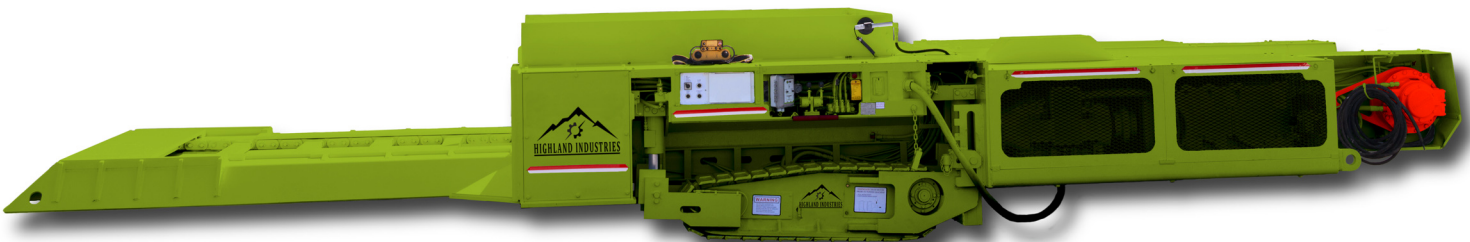
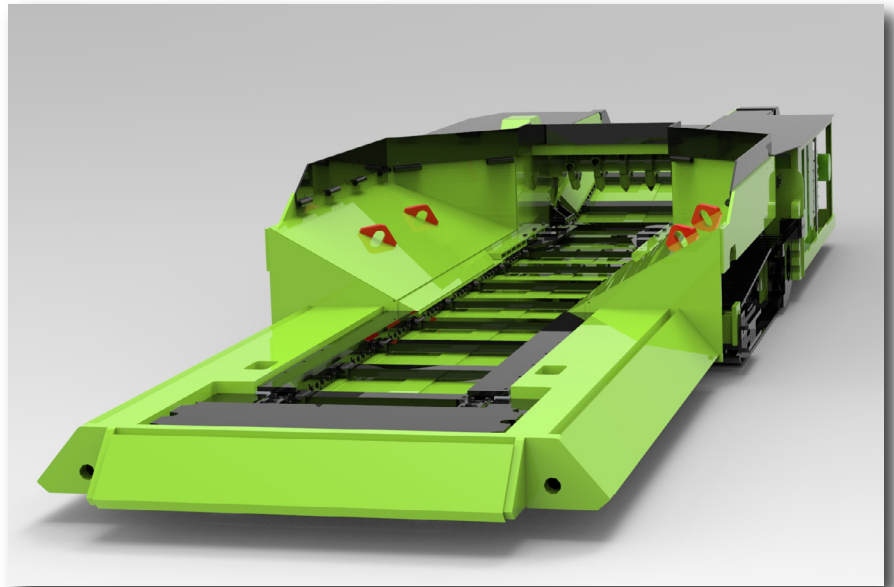


### Specifications:

## WITH VARIABLE FREQUENCY DRIVE CONVEYOR & BREAKER

### Standard Features:

- Model cm 40, 48, 50 or 56
- Conveyor widths:
  - 40" (1016mm)
  - 48" (1219mm)
  - 50" (1270mm)
  - 56" (1423mm)
- Planetary crawler drive
- Electric or hydraulic breaker & conveyor drive
- Center operator controls
- Up to 1200tph production capacity
- Heavy gauge steel frame
- 34" to 72" available height
- Conveyor speed 0 to 120 fpm
- CCO deck
- 3.5 pitch conveyor chain
- 3 way dump load end
- 15" crawler pads



Highland offers the latest updates and custom modifications to meet your mining requirements.

**PROUDLY SERVING THE ENERGY INDUSTRY'S EQUIPMENT NEEDS FOR OVER 30 YEARS**

# AVAILABLE OPTIONS

## Options Available:

- Attached belt return pulley assembly
- Stabilizing jacks
- Auto-lube system
- PLC logic controls
- Wireless or umbellical cord remote control
- Three way or end dump
- Direct drive conveyor
- Direct drive pick breaker
- Haggland drive conveyor
- haggland drive pick breaker
- AC VFD tram utilizes VFD motor controls VFD controller to adjust conveyor chian speed to accommodate load
- HMI diagnostic touch screen
- Removable adjustable discharge chute
- Other options available upon request
- 480v, 550v, 950v input



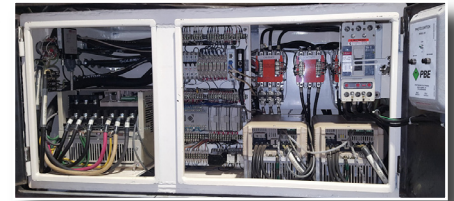
**ADJUSTABLE END DUMP**



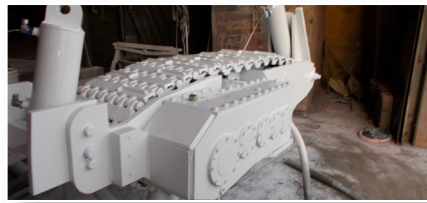
**HMI TOUCH DISPLAY**



**WIRELESS REMOTE CONTROL**



**PLC PANEL BOX**



**ELECTRIC TRAM USES TWIN CRAWLER CHAINS**



**CUSTOM DESIGNED PICK BREAKERS**

## **DIRECT DRIVE**



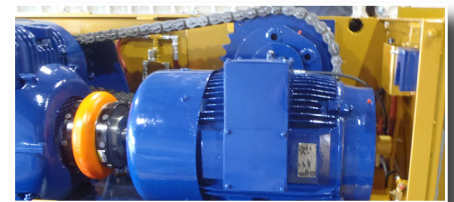
- Alignment free direct drive gear boxes for crusher or conveyor
- Auto guard torque limiter for overload drive protection
- Less maintenance than chain driven setup

## **HAGGLAND DRIVE**



- Piston pumps for hydraulic motor drives can be impalemented on conveyor, crusher or both drives.
- Less maintenance than chain driven setup

## **CHAIN DRIVE**



- The most common feeder drive in the industrie, this set up is chain driven using an electric motor and gear reducer on the conveyor and / or the crusher

**HIGHLAND INDUSTRIES**  
**40 LAMPLIGHTER ST.**  
**OAK HILL, WV 25901**  
**PHONE: (304) 465-3295**  
**FAX: (304) 465-8576**