



PO BOX 1190 - 40 LAMPLIGHTER ST. - OAK HILL, WV 25901
PHONE: (304) 465-3295 / FAX: (304) 465-8576

WWW.HIGHLAND-IND.COM

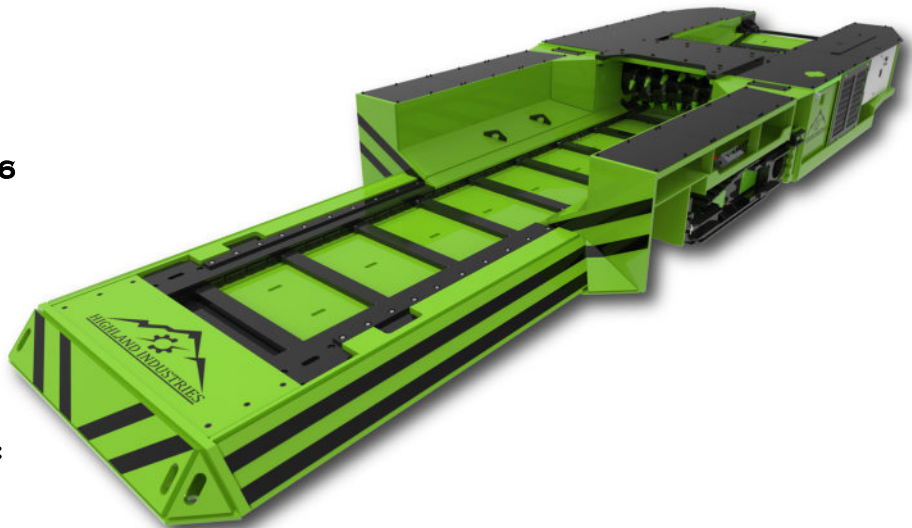
PROUDLY SERVING THE UNDERGROUND MINING
INDUSTRY'S EQUIPMENT NEEDS FOR OVER 30 YEARS

HIGHLAND'S MOBILE FEEDER BREAKER

WITH VARIABLE FREQUENCY DRIVE CONVEYOR & BREAKER

STANDARD FEATURES:

- MODEL CM 40, 48, 50 OR 56
- CONVEYOR WIDTHS:
 - 40" (1016MM)
 - 48" (1219MM)
 - 50" (1270MM)
 - 56" (1423MM)
- PLANETARY CRAWLER DRIVE
- ELECTRIC OR HYDRAULIC
- BREAKER & CONVEYOR DRIVE:
- CENTER OPERATOR CONTROLS
- UP TO 1200TPH PRODUCTION CAPACITY
- HEAVY GAUGE STEEL FRAME
- 34" TO 72" AVAILABLE HEIGHT
- CONVEYOR SPEED 0 TO 120 FPM
- CCO DECK
- 3.5 PITCH CONVEYOR CHAIN
- 3 WAY DUMP LOAD END
- 15" CRAWLER PADS



**HEAVY DUTY FRAMES DESIGNED TO LAST!
REINFORCED IN AREAS WHERE OTHER
FEEDER FRAMES FAIL**

**CUSTOM MODIFICATIONS CAN BE MADE TO
MEET MINE APPLICATIONS**



**CENTER DRIVE OPERATORS CONTROLS CAN BE ON LEFT
OR RIGHT SIDE OF THE MACHINE TO MEET YOUR NEEDS**



AVAILABLE OPTIONS

OPTIONS AVAILABLE:

- ATTACHED BELT RETURN PULLEY ASSEMBLY
- STABILIZING JACKS
- AUTO-LUBE SYSTEM
- PLC LOGIC CONTROLS
- WIRELESS OR UMBELLICAL CORD REMOTE CONTROL
- THREE WAY OR END DUMP
- DIRECT DRIVE CONVEYOR
- DIRECT DRIVE PICK BREAKER
- HAGGLAND DRIVE CONVEYOR
- HAGGLAND DRIVE PICK BREAKER
- AC VFD TRAM UTILIZES VFD MOTOR CONTROLS
- VFD CONTROLLER TO ADJUSTS CONVEYOR CHIAN SPEED TO ACCOMMODATE LOAD
- HMI DIAGNOSTIC TOUCH SCREEN
- REMOVABLE ADJUSTABLE DISCHARGE CHUTE
- OTHER OPTIONS AVAILABLE UPON REQUEST
- 480V, 550V, 950V INPUT



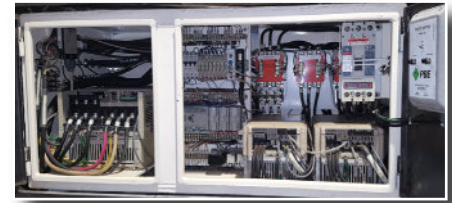
ADJUSTABLE END DUMP



HMI TOUCH DISPLAY



WIRELESS REMOTE CONTROL



PLC PANEL BOX



ELECTRIC TRAM USES TWIN CRAWLER CHAINS



CUSTOM DESIGNED FOR ALL YOUR MINING NEEDS

DIRECT DRIVE



- ALIGNMENT FREE DIRECT DRIVE GEAR BOXES FOR CRUSHER OR CONVEYOR
- AUTO GUARD TORQUE LIMITER FOR OVERLOAD DRIVE PROTECTION
- LESS MAINTENANCE THAN CHAIN DRIVEN SETUP

HAGGLAND DRIVE



- PISTON PUMPS FOR HYDRAULIC MOTOR DRIVES CAN BE IMPALEMENTED ON CONVEYOR, CRUSHER OR BOTH DRIVES.
- LESS MAINTENANCE THAN CHAIN DRIVEN SETUP

CHAIN DRIVE



- THE MOST COMMON FEEDER DRIVE IN THE INDUSTRIE, THIS SET UP IS CHAIN DRIVEN USING AN ELECTRIC MOTOR AND GEAR REDUCER ON THE CONVEYOR AND / OR THE CRUSHER